

LBGTQ+ SERVICES



FEBRUARY 2022

MONTHLY NEWSLETTER

GUESS WHO'S BACK?

Hey y'all, the monthly LBGTQ+ Newsletters are back again! And we've returned to campus. For the first two weeks of February the Rainbow Lounge hours will be a little infrequent as we work to set Rainbow Lounge worker schedules and hire some new students to help staff the space to keep it open and active.

Check out our newsletter and our website for the great February programs. Interested in putting on a program? Contact us!

lbgt@mit.edu

LBGTQ+ SERVICES

Office Hours

Office hours for the LBGTQ+ Services

Assistant Director, Lauryn McNair

(she/they) by email: lbgt@mit.edu

WE'RE HIRING!

LBGTQ+ Services is looking to hire an additional 1 - 2 Rainbow Lounge student workers for the Spring semester. Up to 6 hours a week. If you're available for at least 2 hours at a time between the hours of 12:30pm - 6:00pm let us know.

Duties include: creating a welcoming space, helping with posters and graphics, setting up programs, providing support to students and student groups, maintaining the Rainbow Lounge space.

Email: lbgt@mit.edu

RL HOURS

Monday - Friday: 12:30 - 6pm EDT

Student leaders of cultural/LBGTQ+ clubs and orgs can have extended tap access for their groups.

Email: lbgt@mit.edu

FOLLOW US ON SOCIAL MEDIA

Facebook:
@rainbowloungemit



Instagram:
@rainbow_lounge_mit



UPDATES & ANNOUNCEMENTS

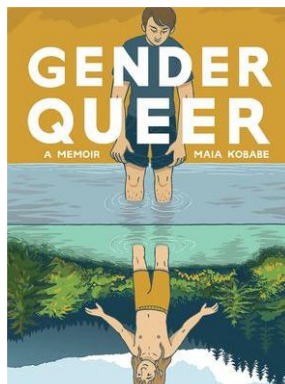
CHECK OUT OUR BOOKS AT: [HTTPS://LGBTQMIT.LIBIB.COM/](https://lgbtqmit.libib.com/)

MONTH LBGQTQ+ BOOK RECS.

GENDER QUEER BY MAIA KOBABE

TAGS: *Aromantic, Graphic Novel*

A useful and touching guide on gender identity--what it means and how to think about it--for advocates, friends, and humans everywhere. their asexual friends and loved ones.



LET'S TALK ABOUT LOVE BY CLAIRE KANN

TAGS: *Asexual, Women of Color*

Explores the struggle with emerging adulthood and the complicated line between friendship and what it might mean to be something more.



QTPOC



WHAT IS QTPOC?

QTPOC is for queer and trans people of color in the MIT community to hang out with each other once a month, chat, watch movies, and have support.

Feel free to join at any time and bring friends!

WHEN AND WHERE IS THIS?

Date: Tues, February 22, 2022

Time: 6:00 - 7:00 EST

Location: mit.zoom.us/j/2258250310

QUEER STUDENT LEADERS CHAT



WHO IS THIS FOR?

Queer Student Leader Chats are a time for the leaders of our multiple queer student groups to gather, mingle and brainstorm.

WHEN AND WHERE IS THIS?

Date: Friday, February 25th

Time: 5:00 - 6:00 pm EST

Location: Rainbow Lounge (50-250)

LBGTQ+ SERVICES SIGNATURE PROGRAMMING

SPEED FRIENDING: ESCAPE THE ROOM



Interested in meeting new people, while locked in a virtual escape room? Join us for a FREE Speed Friending Event: Escape the Room, while slots last.

Register by 2/9/2022:

tinyurl.com/speedfriendingmit

WHEN AND WHERE IS THIS?

Date: Monday, February 14th

Time: Varies

Location: Online

MOVIE NIGHTS!



Come watch a movie with friends and community members! We will be releasing on social media which movies we will be showing. Don't be afraid to let us know if you have any suggestions!

WHEN AND WHERE IS THIS?

Date: Friday, February 11th & 18th

Time: 5:00 - 7:00 pm EST

Location: Rainbow Lounge (50-250)

AROMANTIC SPECTRUM AWARENESS WEEK - DROP-IN



Stop by the Rainbow Lounge to find our book recommendations to celebrate Aromantic Spectrum Awareness Week! We will have button making, book recommendations, resources, and good vibes.

WHEN AND WHERE IS THIS?

Date: Tuesday, February 22nd

Time: 1:00 - 6:00 pm EST

Location: Rainbow Lounge (50-250)



BLACK & QUEER COMMUNITY CHAT

Come join us for a conversation about the intersection of Black & Queer Identity. We will chat about the history of Black & Queerness and how that influences the present. In collaboration with the Black Student Union & Office of Multicultural Programming

WHEN AND WHERE IS THIS?

Date: Wednesday, February 16

Time: 4:00 - 5:00 pm EST

Location: SPXCE (W31-110)



VALENTINES DAY CRAFT EVENT

Come join us for some Valentine's Day style crafting! Valentine's day isn't just about romantic love, but also for showing gratitude towards the folks who mean something special to us. Come create something for a special person in your life!

WHEN AND WHERE IS THIS?

Date: Monday, February 14

Time: 1:00 - 3:00 pm EST

Location: Rainbow Lounge (50-250)

HAPPENING AT MIT: FOR ALL



EVENT W/ UGANDAN HUMAN RIGHTS LAWYER

Join the African Student Association and Nicholas Opiyo (Ugandan Human Rights Lawyer) as they discuss the current status of LBGTQ+ rights in Uganda and Africa, as a whole.

Signup:

tinyurl.com/lbgtqafrica

WHEN AND WHERE IS THIS?

Date: Tuesday, April 26th

Time: TBD

Location: TBD



MIT'S 48TH ANNUAL CELEBRATION OF THE LIFE AND LEGACY OF DR. MARTIN LUTHER KING, JR.

We gather each February as a community to celebrate the life and legacy of Dr. Martin Luther King, Jr. and to honor Dr. King's dual emphasis on global and local issues.

Register:

tinyurl.com/227bwxnt

WHEN AND WHERE IS THIS?

Date: Thursday, February 10th

Time: 11:00AM - 1:00PM

Location: Zoom



LUNAR NEW YEAR CELEBRATION

Join the Office of Multicultural Programming as they hold this year's Lunar New Year Celebration.

Activities include lantern making and Bingo with prizes!

WHEN AND WHERE IS THIS?

Date: Friday, February 4th

Time: 4:00PM - 5:00PM

Location: SPXCE Center (W31-110)

HAPPENING AT MIT: FOR ALL



AUTHOR EVENT: CLAP WHEN YOU LAND

Join My Sister's Keeper, the co-sponsor for the MIT Reads Book event with Elizabeth Acevedo, the author of *Clap When You Land*, a *New York Times* and IndieBound bestseller. Grab a copy of the book in advance, if you'd like!

Check link for updates:

libraries.mit.edu/mit-reads/

WHEN AND WHERE IS THIS?

Date: Tuesday, April 26th

Time: TBD

Location: TBD



WOMEN OF COLOR & LBGTQ+ PROFESSIONAL FUND

Did you know that undergraduate students who are Women of Color or LBGTQ+ students can apply for funding to help cover expenses associated with school applications, exams, professional attire, legal name changes and more?

Visit

wgs.mit.edu/professionalfunds for more details!



WEEKENDS @ MIT INITIATIVE

As part of the Weekends@MIT initiative, aimed to increase substance-free social events on campus on Friday and Saturday nights, Alcohol and Other Drugs Services can contribute up to \$500 to your sponsored event in the Coffeehouse Lounge (3rd floor of Student Center) on a Saturday between 9pm – 11pm. This money could go towards food, supplies, etc.

If you're interested reach out to Elsa of AODS at

weekendsmit_support@mit.edu



CHANGING THE SUBJECT: LYNN NOTTAGE'S BY THE WAY, MEET VERA STARK AND THE MAKING OF BLACK WOMEN'S FILM HISTORY

This is a CMS/W event open to all
More information:

<https://cms.mit.edu/event/samantha-n-sheppard-making-black-womens-film-history/>

WHEN AND WHERE IS THIS?

Date: Thursday, February 3rd

Time: 5:00 - 6:30 pm ET

Location:

mit.zoom.us/j/96579656038



WINTER CLOTHING SWAP

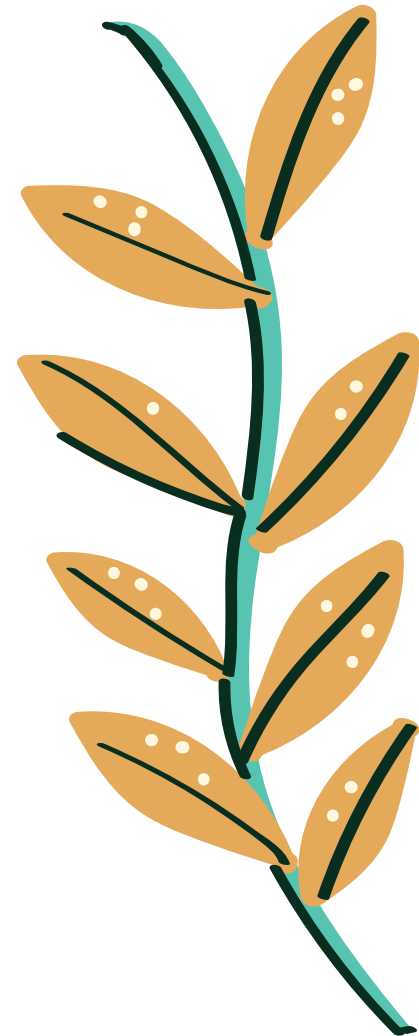
Come join the Winter Clothing Swap held by the Office of Multicultural Programs & UA Sustain! All members of the MIT community are welcome to participate

WHEN AND WHERE IS THIS?

Date: Friday, February 25th

Time: 11:00AM - 4:00PM

Location: SPXCE Center (W31-110)



HAPPENING AT MIT: JUST FOR GRADS



MIT CAPD: PHD RESUMES FOR INDUSTRY

In this workshop we will discuss how to identify the key components of a resume for industry positions. The presentation will focus on the foundational parts of a resume with time for questions.

Register: tinyurl.com/mr77393y

WHEN AND WHERE IS THIS?

Date: Tuesday, February 22nd

Time: 3:00PM - 4:00PM

Location: Zoom Link



MIT CAPD: FACULTY CAREER PANEL - INTERNATIONAL EDITION

Join a panel of faculty from various countries outside the US to learn more about applying for faculty positions internationally, and what it's like to be a faculty member in their respective locations.

Register: tinyurl.com/yxucurn

WHEN AND WHERE IS THIS?

Date: Thursday, February 24th

Time: 10:00AM - 11:00AM

Location: Zoom Link



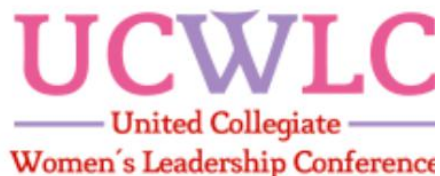
**FENWAY HEALTH
TRANS SUPPORT STUDY**

Are you between 18-35 years old?

Interested, but have not yet started hormone replacement therapy?

Up to \$400 for participation in a study aimed to examine the implications of gender-affirming healthcare!

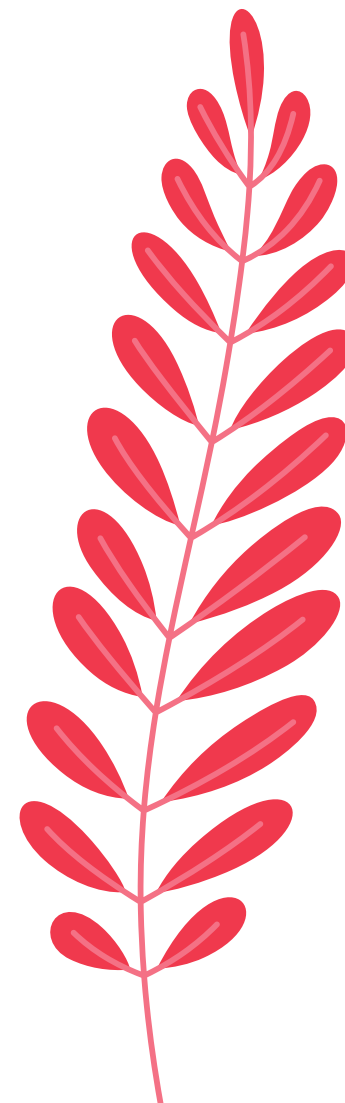
*If you have any questions or interest: Clarissa Pedreira at
(617) 726-5423*

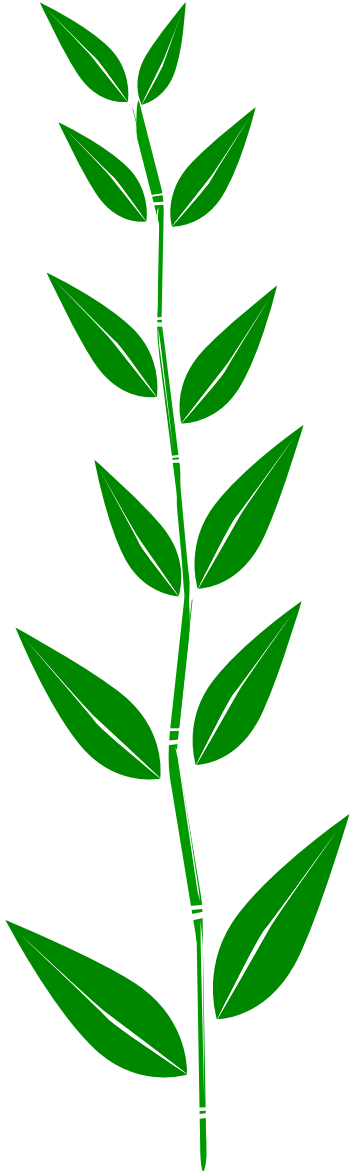


**UNITED COLLEGIATE WOMEN'S
LEADERSHIP CONFERENCE 2022**

The United Collegiate Women's Leadership Conference is an interactive transformational experience where women from all walks of life come together to understand the authentic leader they have within themselves, while preparing them to tackle critical issues facing their campus and larger communities.

*Request funding:
wgs.mit.edu/professionalfunds
Register for Conference:
tinyurl.com/wclc2022*





**WOMEN IN TECHNOLOGY
ERG LUNCH & LEARN**

Guest speakers Heather Yager, Associate Director for Digital Library Services and Tina Pappas, Head of Discovery and Engagement Platforms for Libraries will share their experiences with ITSM/ITIL Governance. All registered members will receive a lunch voucher the day before the event.

Register: tinyurl.com/2ypde4fm

WHEN AND WHERE IS THIS?

Date: Thursday, February 3rd

Time: 12:00PM - 1:00PM

Location: Zoom Link



**NATIONAL MUSEUM OF
AFRICAN AMERICAN
HISTORY AND CULTURE
VIRTUAL TOUR**

Visit the National Museum of African American History and Culture virtually the whole month of February!

Link:

searchablemuseum.com/explore



you are welcome here

The SPXCE Intercultural Center
W31-110 (duPont Athletic Center)

MIT Rainbow Lounge
Walker Memorial 2nd Floor (50-250)

SPXCE.MIT.EDU

LBGTQ.MIT.EDU